

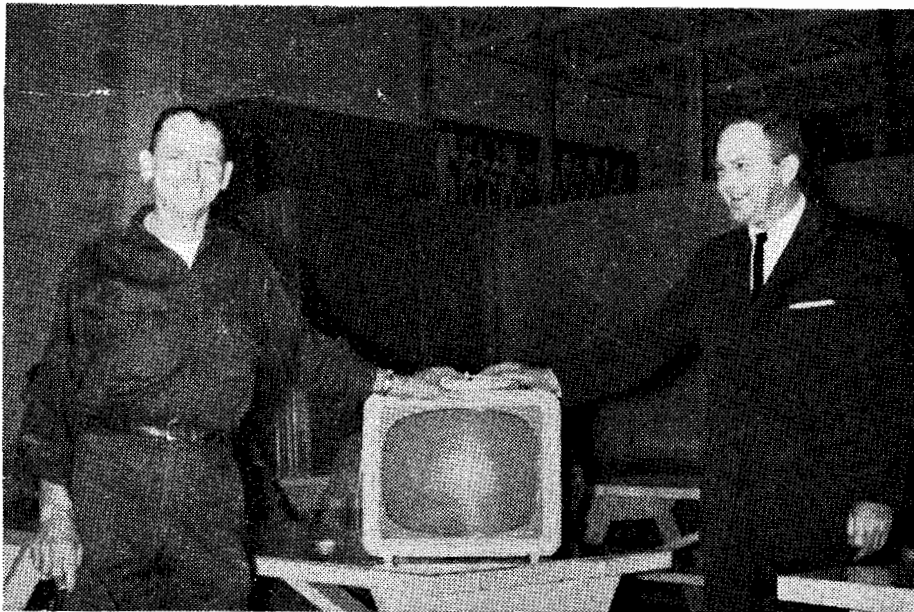
ASCO CHATS

AMERICAN SCREEN PRODUCTS COMPANY, CHATSWORTH, ILLINOIS

Volume I

APRIL 1960

Number 3



The rumors were running wild—Many people confided that they “knew” who the TV winner was — but even those who were positive gathered expectantly for the announcement of the winner and winning entry. Dale Kimmel made the announcement that the name ASCO CHATS had been submitted by Frank Kyburz and voted by the judges as the best entry.

Frank was presented with the TV set by Mr. Winters and expressed his appreciation and thanks to all. Frank wasn't nearly as flustered as Dale was when he discovered his own picture in the first edition.

From Mr. Foskett . . .

I am very glad to have an opportunity to contribute an article to this issue of ASCO CHATS and since one of our more serious problems is actively in my mind at this time, I thought I would just outline it for you with the hope that you, too, may find it interesting and challenging.

You have all seen over the period of the last year or so the expansion program which has taken place in the plant. This program is part of a plan to concentrate in one place all of the manufacturing activities of the company so that, through increased volume and improved efficiency, we can achieve lower cost production and give better service to our customers. By so doing, we will hope to improve our profits, which as you know are essential for growth and security.

The increased activities at the Chatsworth Plant and their increased importance to the future of the company brings me to the problem I mentioned

at the start. It is simply this. As time goes on and in order to face new situations and more complex problems we will require better trained management and more of it.

Located as we are, in a small town rather far removed from industrial centers you can imagine that it is no easy job to either attract or acquire experienced management people and we must, therefore, do our best to develop our own.

This imposes an obligation upon the company and a responsibility upon its employees. The company's obligation is to select proper people and do a good job of training them. The employee's responsibilities are to be aware of his capabilities for advancement and to desire to get ahead.

I am afraid in referring to management and managers we are inclined to make these terms sound very formidable when actually they are not. Managers are people just like the rest of

Keith Bouhl Joins Sales Department

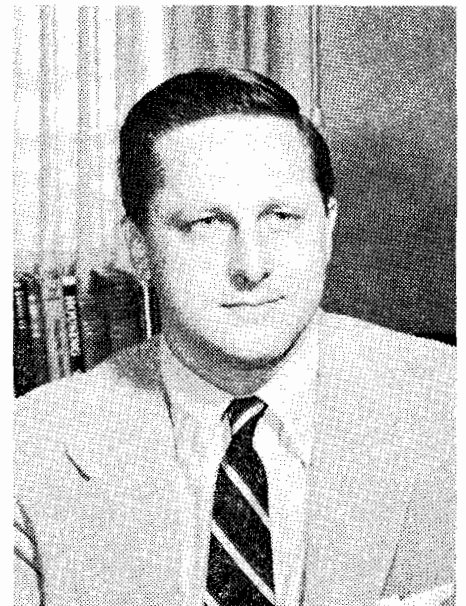
Keith Bouhl has joined the Sales Department as an Institutional Salesman for furtherance of Patio Sales. Keith will be working in the Atlanta area with Rick Schwartzburg helping our distributors promote Patio sales.

We want to extend congratulations to Keith and the very best of luck in the new position.

us and, therefore, it is rather difficult to describe one. I would say, however, that a manager must be able to keep his eye on the over-all company objective, must be willing to do more than normally would be expected of him, and must be willing to admit that he is not always right and that there is much to learn from everyone. In addition, he must be willing to risk making mistakes in order to get the job done and in order to improve himself.

With this rough definition in mind and with an understanding of the problem I have referred to, perhaps some of you who read this will be encouraged to seek increased responsibility or at least realize that managers are made out of people — people who are real important to your future and mine.

—John D. Foskett



MR. JOHN D. FOSKETT
President of ASPC

Screenings

Bob Lee returned March 10 after attending classes for two weeks at the National Training Laboratories at Hariman, New York. He really didn't get a great deal of sympathy from fellow workers when he complained about all the snow they had in the East while he was there.

George Sinks has returned to his home after being transferred to Dwight Veterans' Hospital. Even though George is still on crutches he is working. We have him busy packing corner locks at home.

Production of finished screens has been increased to 7000 a day.

We were happy to receive a letter from John Geiger, now in the U. S. Army, telling us he appreciated receiving ASCO CHATS and news of his fellow workers. John expects to be home and back to work in a short time. He has been in training at Fort Leonard Wood, Missouri. He, too, is complaining about the snow!

Much to the embarrassment of the General Phone Co. our telephone system went completely dead when they were showing the phone installation to the Freshman Science Class of Chatsworth High School.

Did you know — that some of our rolling mills put out as much as 58,000 feet of tube in 8 hours? That's nearly eleven miles of tube from one mill.

It is reported that Frank Kyburz, when going out for Sunday dinner will, in the future, watch both the air and the road for State Troopers.

Dale Scott, with his perfect safety driving record while he was driving the truck, had to go and spoil it all by sliding around the curve and into a truck while coming to work one morning.

There were two plant accidents reported for the month of March.

The employee count is currently 196.

Safety is free — spend it generously.

Jimmy Sadlers have purchased a new home in Piper City and will be moving into it soon.

HAR-VEY Hardware had a surprise birthday party for LeRee Hustedt.

Welcome to the following employees, some new ones and some familiar faces back again: William Dexter, Charles Sorey, Jerry Schmidt, Paul Jensen, John Dohman, Gordon Ruhlander, Wayne Jensen, Robert Kuhring, Donald Blair, Gilbert Haas, Robert Kyburz, Stanley Hylbert, Oscar Stamm, Milford Irwin, David Marshall, Mary Keitzman, Ron VanDerryt, Thomas Pearl, James Pearl and Delmar Willis.



Zoe Pearson, Secretary to Purchasing Agent, Bob Lee, contributed the following column. Each month we plan to feature a column prepared by a different employee.

Zoe has worked at ASPC since August 1957. She and her husband Glenn live in Chatsworth, where Glenn is employed at Hicks Service Station.

Zoe attended the Personnel Training School, Omaha, Nebraska, and was employed as receptionist and switch board operator before going into the Purchasing Department.

JEST FOR FUN

"I've got to get a present," confided a customer to a department-store clerk, "for a very rich old aunt who can hardly walk. Any suggestions?" The clerk considered a moment, then came up with, "How about some floor wax?"

Two eager and dashing young beaux
Were held up and robbed of their
cleaux.

While the weather is hot,
They won't miss a lot,
But what will they do when it sneaux?

There was an eight year old boy
whose father asked, "Why did you kick
your sister in the stomach?"

"Couldn't help it," the boy said. "She
turned around too quick."

Definition: Buccaneer—Current price
of corn.

A distinguished Chinese gentleman named Wong sent his wife from Hong Kong to Manila for a holiday. She failed to return on schedule. In fact, she failed to return at all. Mr. Wong went to Manila and found she had given birth to a lovely baby with blue eyes and blonde hair. How can this be?" replied the man. "Two Wongs don't make a white."

Definition: Lemon juice—An introduction: Lemon juice you to Miss Lyon.

And for an appropriate tail piece, there's the story of Joe, who had been promised a new puppy for his tenth birthday, but had a tough time choosing between a dozen likely candidates at the neighborhood pet shop. Finally he decided upon one nondescript shaggy pup who was wagging his tail fu-

Around the Plant

CONGRATULATIONS TO

Sharon and Dick Turner on the birth of a baby daughter March 6. Sharon was formerly in Payroll Dept.

Mr. and Mrs. Melvin Sandquist on the birth of a baby boy, March 13. Mrs. Sandquist worked in the pre-assembly department.

Hank Majeske and John Boyce were both in Toronto, Canada the last week in March. Hank went up to a Lumberman Show and John went to visit the Higgin Homeshield plant.

The 12 pass Yoder Mill and 6 pass Tishken spline mill arrived the first week in March along with a new slitter.

Congratulations to Mr. and Mrs. Earl Swartz upon their marriage March 7th.

Dave Seward and Pat Mitchell will be married April 9 at 7:00 in the Methodist Church, Gilman.

Willis Alford has entered the Hospital in Kankakee for observation.

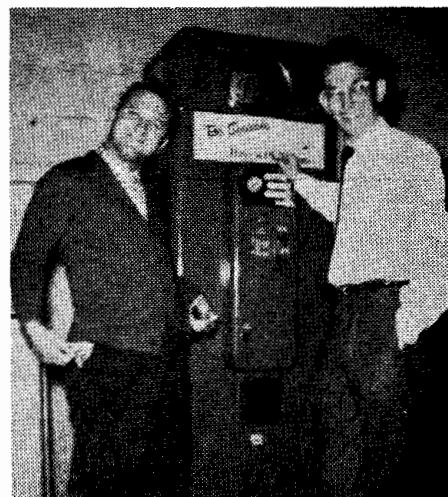
Mrs. Lettie Gray submitted to surgery March 22.

The Shipping Department had 5 out of 7 men sign up to donate to the Bloodmobile. There were 15 in all who donated.

Employees who signed up to donate to the Bloodmobile: Helen Bayless, Walt Griffin, Don Wilson, Duane Read, Louise Rogers, Burt Saxtan, Ralph Donkin, Tom Askew, Ray Crist, Click Sanders, Ron VanDerryt, Jack Wilson, George Wampler, George Bowen, Larry Scott.

Congratulations to Mr. and Mrs. Earl Askew who celebrated their 31st wedding anniversary on March 30.

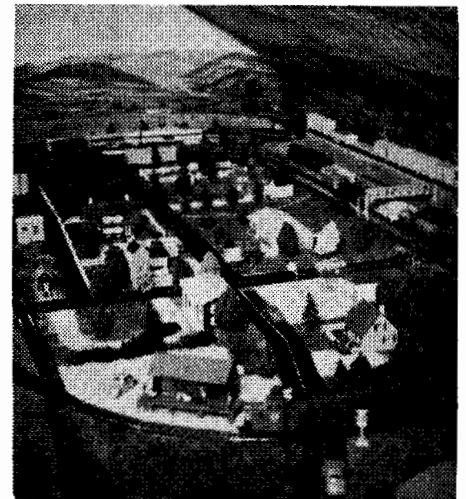
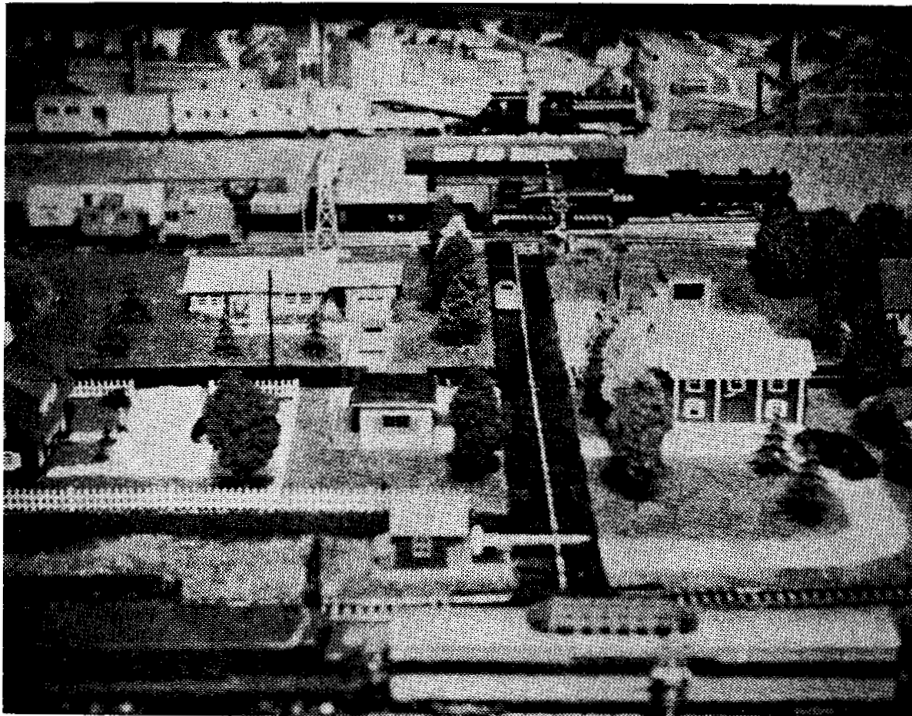
The Sales offices, reception room and hallways in the office are getting a much needed coat of paint, shades of blonde olive, gold and green.



GUESS WHO WAS BUYING!

riously.

Explained Joe: "I want the one with the happy ending."



HOBBY CORNER

(From time to time we hope to feature articles and stories about your Hobbies, Collections, etc. This month Don Hubly, Reduction Mill Operator, has written about his Model Railroad.)

MODEL RAILROADING

A year and a half ago I traded my .027 gauge electric train to Don Runyon for a rifle, sold the rifle, and bought a four piece HO gauge train with 10 feet of track.

Today it has grown into a model layout consisting of three steam locomotives, four diesel locomotives, and thirty-five pieces of rolling stock. Along with eleven remote control switches and approximately 180 feet of track.

HO gauge model trains are scaled 1/67 actual size and are very highly detailed.

The main section of the layout is mounted on a 4x13 foot plywood table, with the remainder mounted on a 1"x8" board surrounding the 13x15 foot room.

The location of the layout is the suburb of a large city. The large city is painted scenery tacked on the surrounding walls. To get to the suburb you come down the main street of the city, through a viaduct, across a road track and you are now entering "Beanville."

The layout consists of four main line tracks and one switching yard. Three of the main lines go completely around the room on the 1"x8" board. The fourth main line is bordering the edge of the table and goes through a mountain at the North end of the table. There are two highways, one from the North and one from the South, that meet in the center of the layout and proceed across the railroad and viaduct

into the city.

Coming down the main highway you pass over a railroad track, under another viaduct, by a country road that leads along a small river up the mountain too a rather large, but somewhat rundown farm and continues across two railroad tracks and beside a radar tower.

On down the highway you pass a lake, cross another railroad track, pass the depot on the left and a small cottage and orange grove on the right. Then you come to an intersection with a Shell gas station on the right.

Driving in from the South, you go under another viaduct, over more railroad tracks, and past a Dairy Queen stand. Beyond there you will pass the railroad yards with their switching tower, water tower and two story control tower. Then make a left turn across three railroad tracks, pass a colonial home, and you are back to the intersection and the gas station.

Leaving this intersection, you can go down a side street and you will see a Coca Cola stand, a big ranch house, a duplex building, small apple orchard, and pass a truck farm.

Upon which you will come to a spur track with a coal shed and coal loader, belonging to the Snooker Coal Company.

The power supply for the "Sandy Soo Railroad" is five 12-volt DC Taper Wound Rheostats. These, in "people-like" language are called power packs. The track layout is insulated and blocked off into eight separate sections. Through the use of selector switches any given power pack can control all, or any one of the eight track sections. With this means of controls, trains can be made and sent out on the road, complete their runs, and back to the yards, without disrupting the operation of the

other trains on the layout. Five trains can be operating and changing tracks in this manner.

As far as major equipment is concerned the layout is almost complete.

But many hours can be spent yet with the completion of fine details, such as stringing wire on utility poles, lighting the houses, wiring automatic crossing gates and flashers, making action scenes (such as workmen on the railroad, people on picnics, etc.) and countless other projects.

Building a railroad is a lot of hard work and fun, so if you can convince your wife that you need one and can steal your kids' room, you've got a good start.

By Don Hubly



The blank space above? That empty space can mean \$5.00 to you. All you have to do is write a question that you would like to have answered in next month's paper. If your question is published you will be \$5.00 richer! What kind of a question? Any question concerning ASPC you feel you and other employees would find of interest. We may publish more than one question each month so write them up and drop them in the Blue News Box by April 15.

Did You Know . . .

U. S. Income Tax became law in February 1913?

The Boy Scouts were founded in 1910?

Spectacles were invented in 1825?

Republican party started in 1854?

Star Spangled Banner became the official anthem in March 1931?

First pencil with eraser appeared in 1858?

CLASSIFIED

FOR SALE—125 Harley Davidson Motorcycle, 1952.—Larry Boruff—Clock No. 130.

HOUSE FOR SALE—Price reasonable, good location, 2 blocks from new Chatsworth Grade School, 2 blocks from business district. Immediate possession.—Larry Boruff—Clock No. 130.

WANTED — Wanted to buy, a good piano.—John Boyce.

FOR SALE—1 pair ladies' white figure ice skates, size 8. \$8.00.—Jim Sadler.

WANTED—Used Rotary Lawn Mower.—Bill Hoelscher.

WANTED—Good used coaster wagon.—Arline Foster.

FOR SALE—Pekingese puppies, AKC registered.—Sandra Hubly.

FOUND—32 green stamps. You may claim by identifying same.

FOR SALE—Man's gray coat with fur collar, size 40. Reasonably priced—Jesse Sorey — Clock No. 167.

FOR SALE—1950 Dodge 4 dr., good shape for a second car to drive to work.—Harold Blasingim.

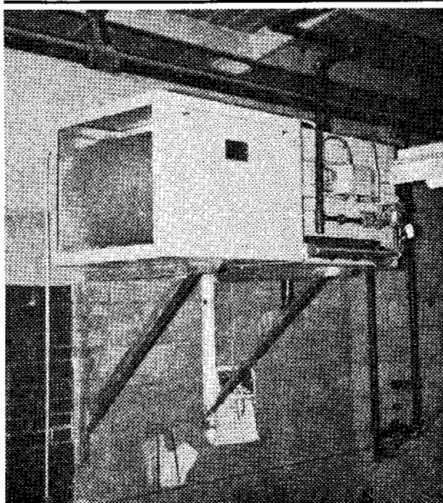
WANTED — Helicopter to get Mamie Maxey to work.

FOR SALE—Wood fibre flowers for table or wall decorations. — Laura Richardson. Clock No. 160.

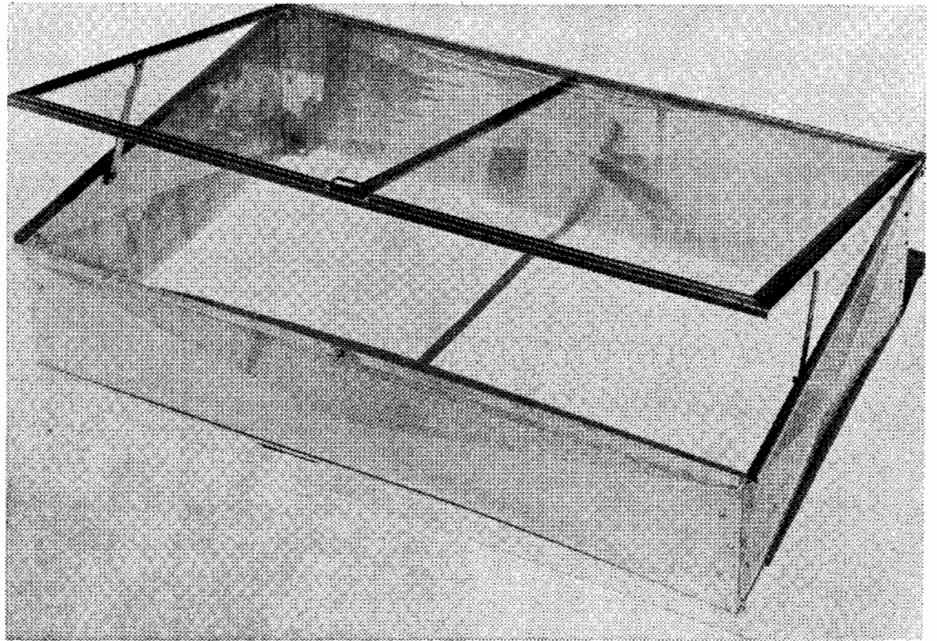
FOR SALE—Shelled popcorn, white or yellow, 7½ pounds for \$1.00.—Raymond Rosenberger. Clock No. 10.

FOR SALE — Good used dining room table, buffet and six chairs with leather seats \$25.00. — Jesse Sorey, Clock No. 167.

WANTED—Old guns and ammunition for collection.—Perry Virkler.



The above furnace has been installed in the paint storage room in order to maintain proper temperature control for the paints and solvents used in our screen coating.



Two cold frames similar to the one pictured were sent from our model shop to a display in the World's Largest Shopping Center, Bergen Mall, Paramus, New Jersey. These frames were in DuPont's exhibit at Good Housekeeping's show held there entitled "The Wonderful World of Tomorrow." Nichols is planning to call the cold frame, which is glazed with DuPont's Mylar panel, the Flowerette and is expecting many adaptations to be made of the frame.

Your Anniversary

(Years of Service with ASPC)

April	4 Years
	LaRee Hustedt
6 Years	David Norvell
Rollin Scott	
Edwin Watson	3 Years
Joe Weir	Ruth Metz
	Frank Kyburz
5 Years	
Paul Bailey	1 Year
Mamie Maxey	Mary Keitzman
John Daube	Ira Haskins
Francis Shambrook	Larry Boruff
Tom Askew	Robt. Hoogstraat
Leonard Hinkle	John Bouhl
James Sadler	Bernice Haag
Vernon Garmon	Homer Smith

Whatever you love you are its master; whatever you hate, you are its slave.—Dagobert D. Runea.

A good leader takes a little more than his share of blame; a little less than his share of credit. — Arnold H. Glasgow.

So many men in industry are looking for park benches along the road where they can sit down and rest. But the only park benches I know of are immediately in front of the undertaker's place. There is no spot in an industrial situation where you can sit down and rest. It is a question of change, change, change all the time. And it is always going to be that way.—Charles F. Kettering.

STATEMENT OF ASPC SOCIAL CLUB

Jan. 1, 1960 to March 16, 1960

Receipts

1/4	7 Up	\$ 1.40
1/11	O'So Btlg. Co.	37.50
1/12	Exact Vendors	76.08
1/26	Pepsi Cola	33.23
2/2	7 Up	4.40
2/12	Exact Vendors	65.77
2/18	7 Up	3.20
2/24	Pepsi Cola	36.60
3/16	Exact Vendors	87.46
3/16	7 Up	5.30

Total Receipts\$350.94

Expenditures

1/5	A. Milne & Sons	\$ 10.30
1/5	Bernardine Flor	10.30
1/12	G. Sinks Fund	20.00
2/2	Edingers	3.11
2/3	Andy Sutcliffe	10.65
2/3	Florence Hack	3.10

Total Expenditures\$ 57.46

Balance\$293.48

Previous Balance 95.84

Total Balance\$389.32

Submitted by Keith Bouhl

SYMPATHY

We extend heartfelt sympathy to the Bias Probus family on the death of their infant daughter.